



Premium
HIKLAS CS8

- Aesthetic & Slim lock
- High Grade 302 Stainless Steel
- SS 304 High grade Mortise
- High sensitive low consumption PCB



**PH
SECURITY SYSTEMS**

WE PROTECT WHAT YOU TREASURE MOST



HiKlas



Features

- Stand alone electronic lock with Mifare Classic RFID technology.
- Operates with a completely sealed contactless module.
- High security mortise available in Euro version.
- 3-point latch construction.
- Mortise combined with door position report function for tracing and recording the door status and openings with mechanical override
- Panic release function-the deadbolt and latch are automatically retracted by inside handle for Easy opening in emergency situation.
- ADA compliant.
- Powered by 4 AA alkaline batteries installed outside of the front lock that will last for approximately 1 year with 10 times operations daily.
- Compatible with door lock management system platform.
- Compatible with software management function and Non-software management function.
- 400 access events audit reports can be assessed.
- Emergency Opening with Mechanical cylinder
- Optional Mobile key unlocking
- Electro-mechanical locking mechanism on mortise
- Up to 200,000 cycles

Premium

HIKLAS CS8 HOTEL LOCK



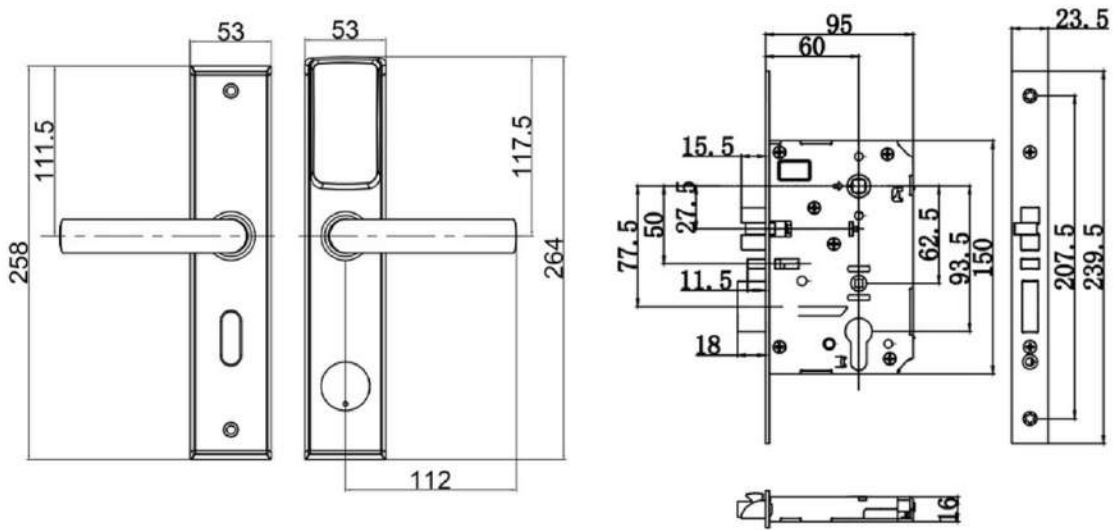
**PH
SECURITY SYSTEMS**

WE PROTECT WHAT YOU TREASURE MOST



HiKlas

Lock dimension



3.0 Hotel System



Hotel Smart Lock



Encoder



CARD



Energy Saver



Access Control



Elevator Controller



Handheld

Premium

HIKLAS CS8 HOTEL LOCK



**PH
SECURITY SYSTEMS**

WE PROTECT WHAT YOU TREASURE MOST